



Peer Learning Activities on digital solutions for the  
recognition agenda  
Input phase



# The use of artificial intelligence for the recognition process

---

Chiara Finocchietti  
CIMEA NARIC Italy

19 September 2023



This PLA is organised within the framework of the EU co-funded project [TPG-LRC CoRE](#)



- In today's emerging technologies, the conversation inevitably revolves around Artificial Intelligence.

- AI is at the forefront of modern technological advancements?

- AI is reshaping digital solutions?

# THE NEW DIGITAL SOLUTIONS: EMBRACING ARTIFICIAL INTELLIGENCE?



*By far the greatest danger of Artificial Intelligence is that people conclude too early that they understand it. There is light in the world, and it is us!*  
Eliezer Yudkowsky

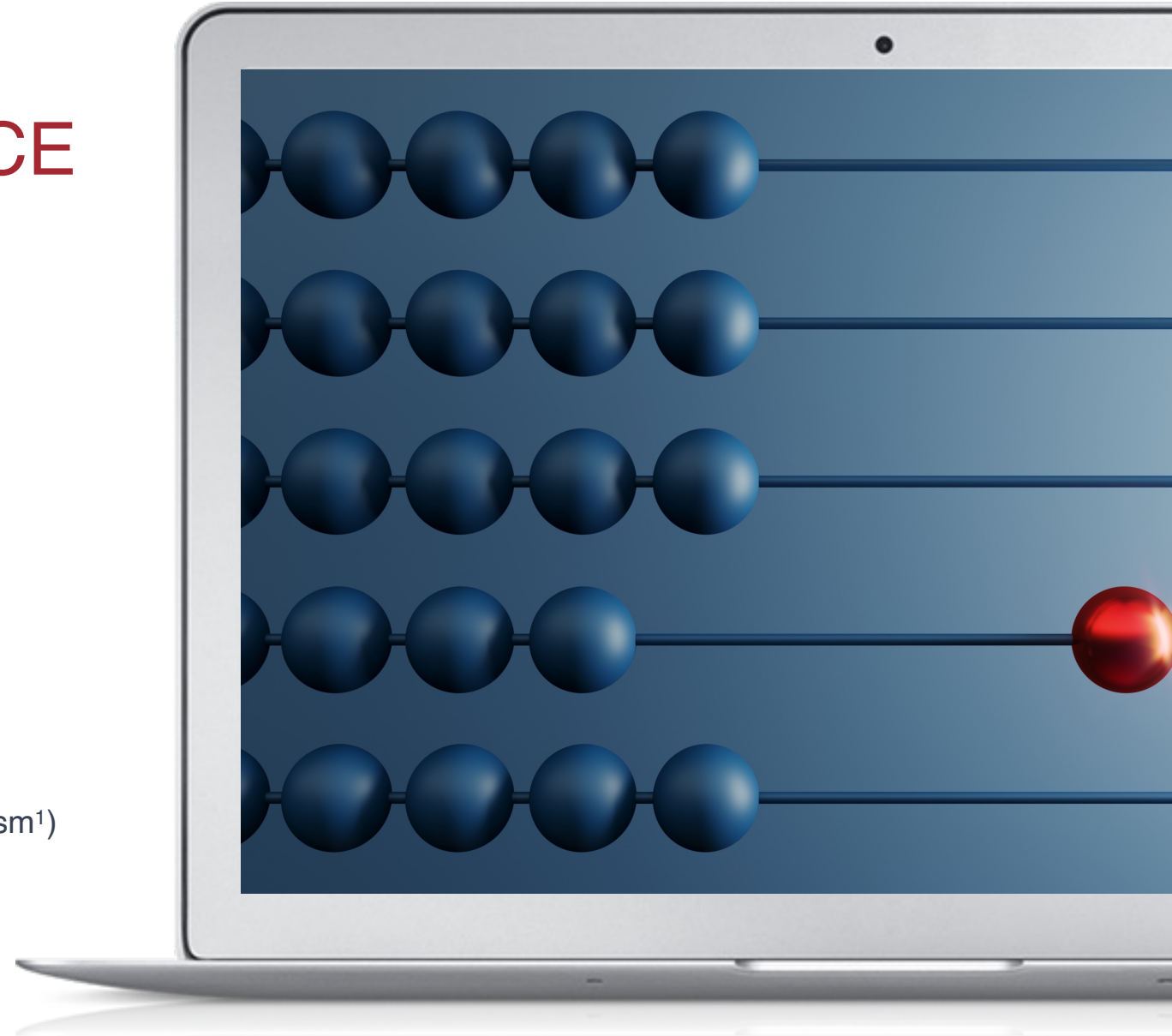
# NAVIGATING ARTIFICIAL INTELLIGENCE RISKS, OPPORTUNITIES, AND ACADEMIC INTEGRITY

## •How to ensure an ethical approach?

- Ethical AI development and deployment
- Data privacy and data management/Data poverty
- Overreliance on AI

## •How to ensure academic Integrity?

- The importance of human judgment
- Bias and fairness in AI-driven assessments
- New forms of research and analysis (post-plagiarism<sup>1</sup>)





# CIMEA'S JOURNEY: INTEGRATING ARTIFICIAL INTELLIGENCE FOR RECOGNITION

**CIMEA's vision:** from needs analysis to the idea of integrating AI to improve recognition

Collaboration at national level (Ministry for Universities and Research)

**Now:** INPUT and THROUGHPUT phases

**INPUT Phase:**

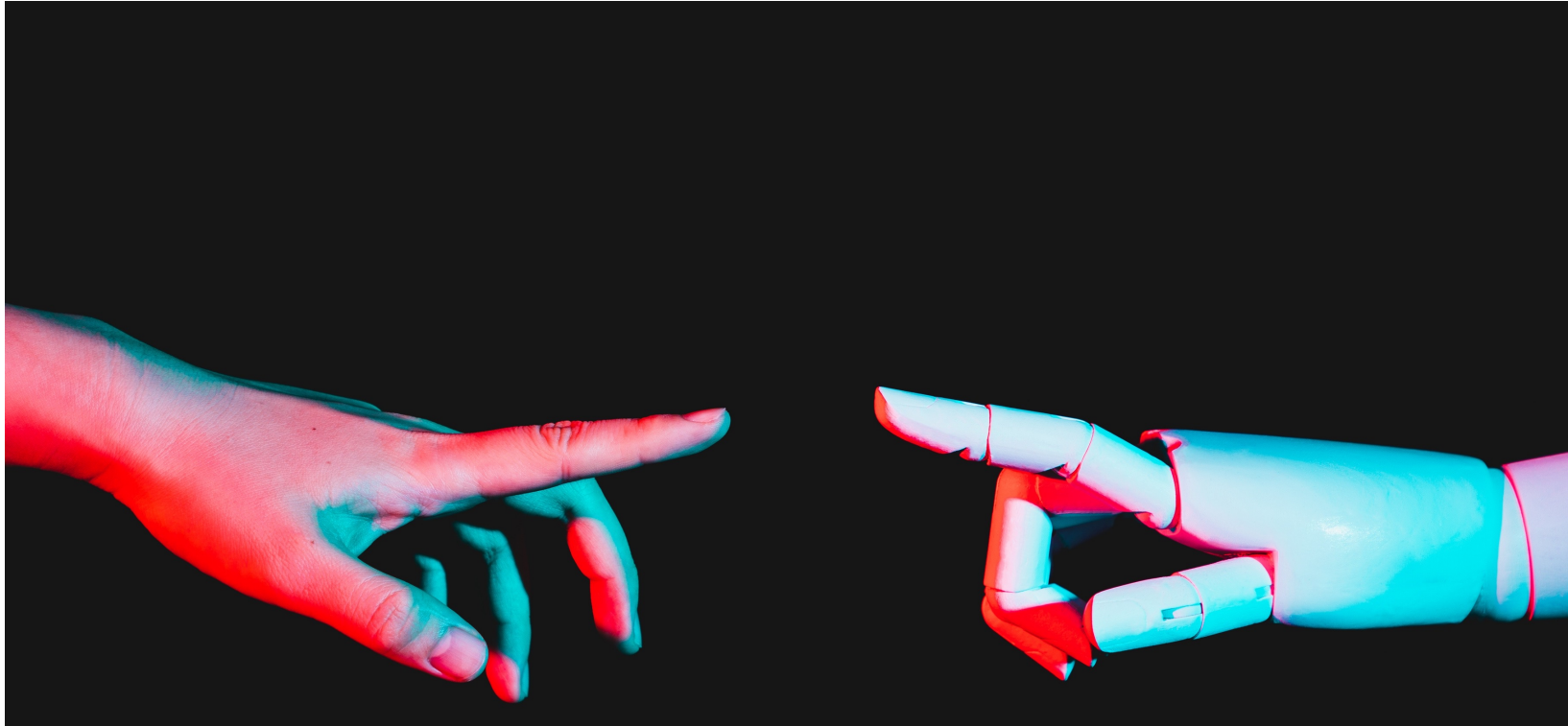
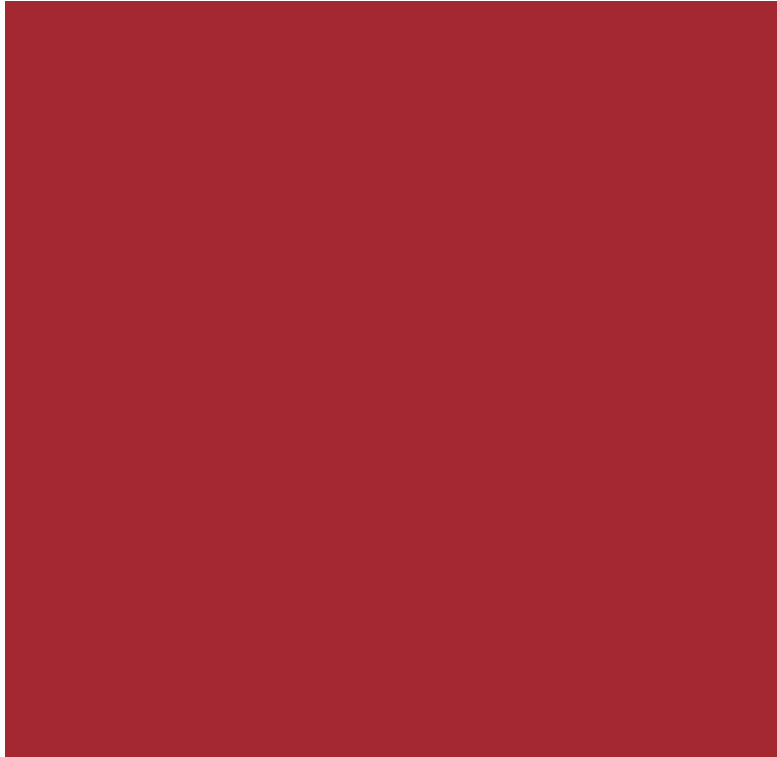
- verification of authenticity

**THROUGHPUT Phase:**

- automatisisation within the process of releasing our statements of comparability

# CIMEA'S JOURNEY: INTEGRATING ARTIFICIAL INTELLIGENCE FOR RECOGNITION

- **The irreplaceable role of human expertise:**
  - AI assessment of authenticity on a probability scale
- **Guideline adherence:**
  - Following national data treatment guidelines
- **Changing processes:**
  - embracing emerging technologies to meet specific needs





Thank you!



This PLA is organised within the framework of the EU co-funded project *TPG-LRC CoRE*

All images are from the MS office archive



[www.cimea.it](http://www.cimea.it)



[@CIMEA\\_Naric](https://twitter.com/CIMEA_Naric)



[CIMEA-NARIC Italia](https://www.linkedin.com/company/cimea-naric-italia)